

TITA COLOR

Press fittings for multilayer pipes



DOUBLE O-RING SEAL

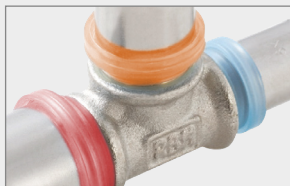
Every fitting is equipped with 2 O-Rings: perfect tightness during the time!

PIPE SOCKET MADE IN STAINLESS STEEL

Stainless steel gives an higher system rigidity than aluminium. Furthermore, being stainless steel resistant to corrosion, it is possible to use RBM fitting "laid under floor or wall", too.

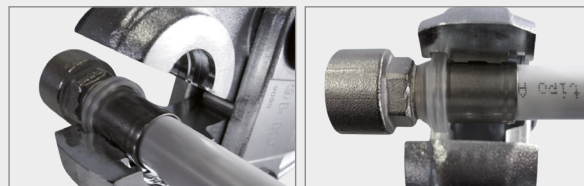
"ANTI PULL-OUT" SYSTEM

Specific fishbone shape of fitting body allows and higher grip to the pipe, avoiding pull-out of the pipe in the compression action.



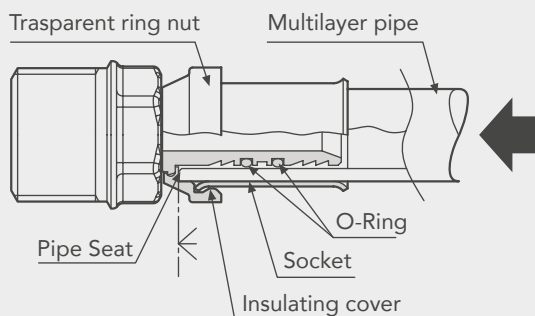
TRASPARENT PLASTIC RING NUT

Trasparent plastic ring nut allows to verify correct pipe positioning into the fitting. Produced in one piece only (without hole), therefore resistant to possible strikes.



PERFECT COMPRESSION SYSTEM

Ring nut finds the perfect seat in the TH series plier (recommended series). This makes the compression easier, ensuring that the fitting will not move.



MULTI-CLAMP PRESS-FITTING

RBM press fittings can be used with different clamp profiles:

TH, H, U, B, F \varnothing 16x2, 18x2 and 20x2;

TH, H, B \varnothing 26x3;

TH, H \varnothing 32x3;

TH \varnothing 40x3,5, 50x4 and 63x4,5.

Compression of press-fitting for gas fuel system must be done exclusively with TH profile clamp!

COLOR CODING SYSTEM

The new color code for fitting nuts is designed to improve usability, safety, and communication on construction sites. It supports RBM's strategy focused on efficiency and precision, facilitating field work and reducing the margin for error

thanks to immediate visual identification even from a distance. The RBM proposal is ready to be adopted as a new standard. It is a code applicable in the field of multilayer piping and the plumbing and heating sector.



\varnothing 16

PANTONE 290 C



\varnothing 18

TRANSPARENT WHITE



\varnothing 20

PANTONE 158 U



\varnothing 26

PANTONE 1787 CP



\varnothing 32

PANTONE 7655 C



\varnothing 40

PANTONE 7472 C



\varnothing 50

PANTONE 2286 C



\varnothing 63

PANTONE 429 C