

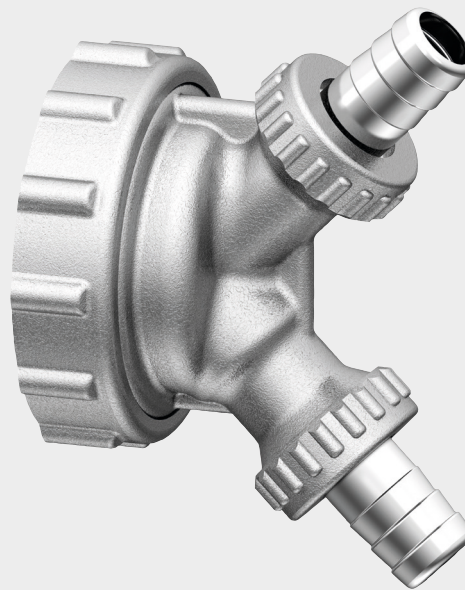


CONNECTOR TO WASH THE SYSTEMS

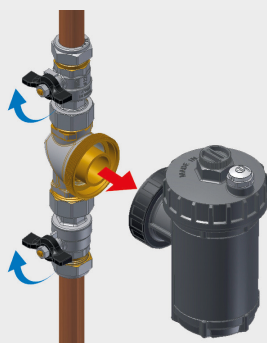
RBM provide a connection tool easy to use and makes it easier and quicker to wash a heating system (as required by law).

The RBM connector to wash systems is compatible with all components fitted with an adjustable diverter: SafeCleaner2 (2405 - 2344 - 2319 series) and Mag-Nus2 (3548 series) dirt separator filters and Airterm UP (2649 series) deaerators.

Thanks to the **RBM connector**, there is no need to take down the circulator or look for other points to access the system: simply unscrew the filter or deaerator body, screw the connector to the previously installed diverter and carry out flushing operations.



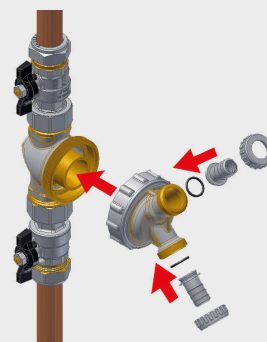
OPERATING INSTRUCTIONS*



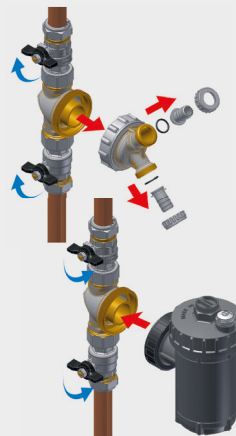
1. Shut off the device by closing the ball valves and remove the main body of the filter from the diverter.



2. Screw the connector onto the diverter body.



3. Connect the inlet and drain pipes to the two outlet connectors of the connector itself, open the ball valves and carry out the flushing.



4. After washing the system, shut it off, remove the connector and place the main body of the device back on the diverter.

* For further information, please see the product data sheet available at www.rbm.eu.

Strong: made entirely of brass

Quick and easy to install

With outlet connectors

Universal: compatible with the whole range of SafeCleaner2 and Mag-Nus2 filters, and Airterm UP deaerators

