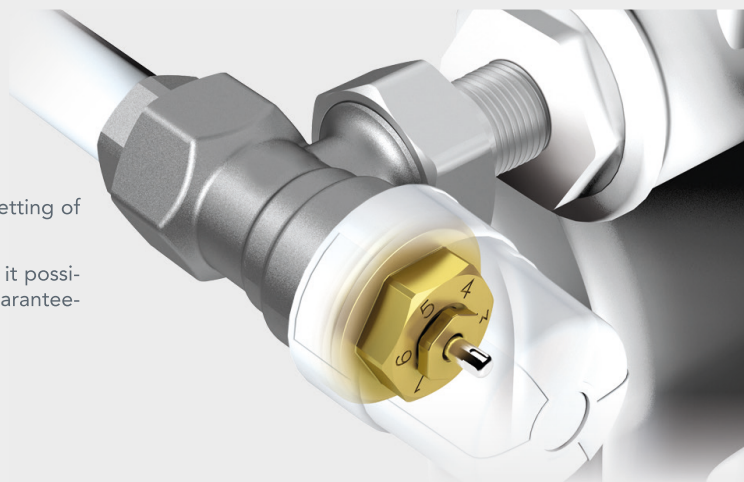
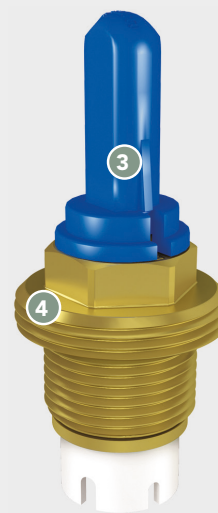
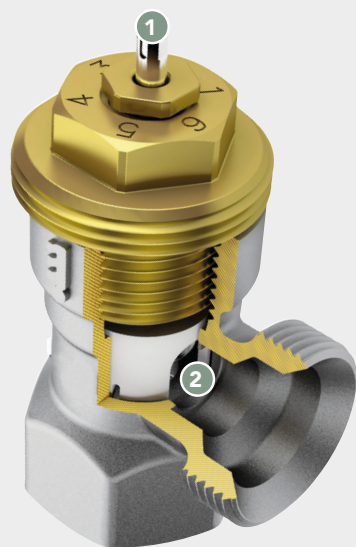


THERMOSTATIC VALVE WITH PRE-SETTING



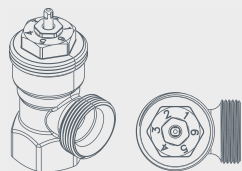
Thanks to a special internal device they allow the pre-setting of the head loss quickly and effectively.

The use in combination with thermostatic heads makes it possible to keep the ambient temperature constant, thus guaranteeing an effective energy saving.



- 1 Micrometric setting**
KVS values can be set through the pole on the top of the cap unit, simply using the adjustment tool.
6 Kvs values for pre-setting

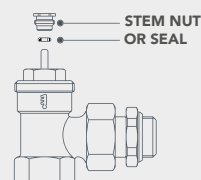
- 3 Adjustment tool**
- 4 Cap unit for pre-setting**



- 2 Pole with vulcanized elastomer disc**
Elastomer directly vulcanized on the pole disc:
 - Avoids noise
 - Disc does not stick on the valve seat



LIQUID EXPANSION THERMOSTATIC SENSOR. HIGHER SENSITIVITY!



Possibility of maintenance service while system is in operation.