

SELF-CLEANING FILTER

With extractable cartridge (filtration level: 100-300-800 micron) complete with pressure gauge and ball-valve with hose connection

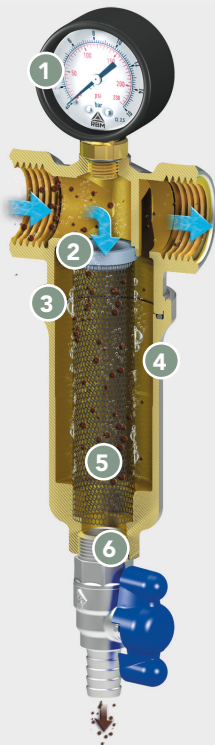


RBM self-cleaning filter solve system problems caused by particles in suspension pollution. RBM product range is suitable for small, medium and big water systems. The specific structure of the filter allows impurities collect on the bottom of the filter seat making the maintenance easier.

Cartridge can be cleaned opening the discharge ball valve with hose connection and leave the water pass through it.

INSTALLATION

Correct installation of the filter is in **horizontal position, with filter seat pointed to the bottom**. For a correct assembly please be careful to the arrow (representing water flowing direction) on the body of the ball valve.



- 1 Pressure gauge
pressure 0-16 bar
- 2 O-Ring in PTFE
- 3 O-Ring
- 4 Body and cap made of nickeled brass
- 5 Extractable stainless steel cartridge
(100-300-800 micron)
- 6 Discharge ball valve

MAINTENANCE

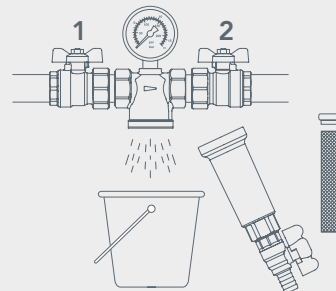
Passing through the meshes of the cartridge, water get cleaned and the impurities are collected on the bottom of the filter seat (*). Periodically the filter must be cleaned.

Operation for the replace of the filtering cartridge

- Place the container under the filter.
- Close ball valves 1 and 2.
- Unscrew filter house-cap (in the case of high temperature system, be cautious and use right protections to avoid direct contact with fluid).
- Extract the cartridge and shortly open the ball-valve. Brush it under the water; in the case of damage replace it.
- Put the cleaned cartridge inside the seat.
- Close the cap.
- Open the ball-valves.

Operation for the cleaning of the filtering cartridge

Cartridge can be cleaned opening the discharge with hose connection and leave the water pass through it.



SELF-CLEANING: Easy and effective clean of the cartridge opening the discharge ball valve

Resistance to high pressure due to reinforced cartridge (PN 16)

WARNING: During this operation ball valves 1 and 2 must be opened.